

# LISTE OF DIANE'S INTEGRATED DRIVERS



**BOW MEDICAL**  
— EDITEUR DE LOGICIELS —

# LIST OF RS 232 DRIVERS INTEGRATED IN DIANE

**409 TYPES OF DEVICES  
CONNECTABLE (OR TO  
COME) ON 31/01/2021**

**Alaris/Cardinal Health** : Infusion system

Asena GS, GH, CC, Tiva, Aséna PK, Tiva (MK4)

**Alaris/Cardinal Health** : Pompe GP (under study)

**Alaris/Cardinal Health** : Pompe GW (under study)

**Alaris/Cardinal Health** : Pompe SE - Signature  
Edition

**Alaris Ivac** : Pompe à PCAM, et à PCA P5000,  
P6000, P7000 (**firmware version required**)

**Aspect BIS** : Analyse bispectral A2000, A2000 XP,  
Vista et View

**Baxter Prismax**

**Baxter Starling: (to come: 1st quarter of 2021)**

**Becton Dickinson** : Base A, Pilote Anesthesia,  
Pilote B, Pilote C

**Bruel & Kjaer** : Halogen analyser 1304 (old  
equipment)

**BBraun** : Syringe pumps connected to the  
SpaceStation + module SpaceCOM  
(communication with the latter, validation in  
progress)

**Carefusion/Viasys** : Ventilation system Avea  
and Vela

**Covidien** : Monitor Invos 5100C

**Covidien** : Nutrition Pump Kangaroo EPump

**Covidien** : Puritan Bennett 980 et 840 (not  
validated)

**Covidien BIS (to be confirmed by a test if  
identical to the « Bis Aspect »)**

**Critikon** : Automatic blood pressure monitor 1846,  
1846P,1846SX, 1846SXP, 8100, 8100T, XL : (**old  
equipment, non-validated support**)



**Critikon** : Monitor Dinamap Plus 8700 and  
9700, Dinamap Pro

**Critikon** : Monitor Dinamap DMS

**Daméca** : Ventilator Siesta i TS.

**Daméca** : Monitor d'IRM Millénia

**Dräger** : Monitor PM 8014, 8030, 8040, 8050,  
8060

**Dräger** : Monitor Perseus A500

**Dräger** : Monitor IACS C500, C700 (with  
monitor Infinity M 540). **Cable RJ22/RS232  
needed and different protocol**

**Dräger-Siemens** : Ventilator Physioflex

**Maquet-Siemens** : Ventilator Kion

**Dräger-Siemens** : Monitor SC 5000, 6000,  
6002, 6802, 7000, 8000, 9000, 9000 XL, Infinity  
Delta, Delta XL, Gamma et Gamma XL,  
Kappa, Kappa XLT, Vista, Vista XL, Omega S  
(**base Kappa + panel PC C700 with knurl**)



# LIST OF RS 232 DRIVERS INTEGRATED IN DIANE

**409 TYPES OF DEVICES  
CONNECTABLE (OR TO  
COME) ON 31/01/2021**

**Drager** : Gas Analyser Vamos

**Drager** : Capnosat, pEEG

**Drager** : Ventilator Cato, Cicéro B, C, EM, Julian, Primus, Fabius GS-Tiro-Plus-XL Plus, Premium, Zeus

**Drager** : Ventilator Savina 300

**Drager** : Ventilator Sulla, Titus, Trajan

**Drager** : Ventilator Oxylog 3000 plus,

**Drager** : Ventilator Evita, Evita2, Evita2 Dura, Evita XL, Evita4

**Drager** : Ventilator Evita Infinity V300, V500, V600, V800

**Drager** : Ventilator Babylog 8000, Babylog VN500

**Drager** : Ventilator Atlan

**Drager** : Monitors Vista 120 / Vista 120D / Vista 120S

**Edwards Lifescience** : Monitor EV1000

**Edwards Lifescience** : Monitor Vigiléo

**Edwards Lifescience** : Monitor Vigilance and Vigilance II

**Edwards Lifescience** : Monitor Hemosphere : **(to come: 1st quarter of 2021)**

**Frésenius-Vial** : Syringe pump Pilot A2, B, C, CE, Anesthésie2, Delta

**Frésenius-Vial** : Syringe pump Agilia serie « Intuitive Generation » : Injectomat/Injectomat MC / Injectomat TIVA/Volumat/Volumat MC

**Frésenius-Vial** : Syringe pump Injectomat P, 2000, 2000 Anesthesia, 2000 mc

**Frésenius-Vial** : système AIVOC Master TCI and système in PCEA

**Frésenius-Vial** : Infusion base A, Intensive, Orchestra and Priméa



**Frésenius-Vial/Kabi** : Rack multi syringe pumps Link4+, Link 6+, Link 8+ in connection with infusion devices Agilia serie « Intuitive Generation »

**Frésenius-Vial** : syringe pump « Agilia Connect » : Agilia SP / SP MC/ SP MC WIFI / SP TIVA / SP TIVA WIFI / SP PCA / SP PCA WIFI / VP / VP MC / VP MC WIFI : **(to come: 1st quarter of 2021)**

**Frésenius-Vial/Kabi** : Rack multi syringe pumps Link4+, Link 6+, Link 8+ en lien avec des dispositifs de perfusion Agilia « Connect » : **(to come: 1st quarter of 2021)**

**Fresenius** : Nutrition pump enteral Applix

**Fresenius** : Optima **(not validated)**

**Fukuda Denshi (Kontron)** : Monitor DS-5100, 5300, 5400, 7000, 7100, 7200 et 7300

**Gamida** : Cardio Q

# LIST OF RS 232 DRIVERS INTEGRATED IN DIANE

**409 TYPES OF DEVICES  
CONNECTABLE (OR TO  
COME) ON 31/01/2021**

**Gambro Artis** (Haemodialysis device)

**Gambro PrismaFlex** (Haemodialysis device)

**GE-Datex** : Monitor Capnomac Ultima

**GE-Datex** : Monitor Cardiocap 2, Cardiocap 5

**GE-Datex** : Monitor AS3, AS3 Compact, S5 AM Compact, S5 CM,S5 FM, FM Light, Light, F-CM1, Cardiocap 5, IMM light, Carescape B450, B650 and B850

**GE** : Monitor Procure B20, B30 and B40

**GE-Datex** : Ventilator ADU/AS3, Avance S5, Aespire S5, Aestiva 5, Aestiva 3000, Aestiva 5 compact, Aestiva 5 MRI, Aestiva 5, Engstrom pendant, Aisys, Avance, Centiva 5, Engstrom CareStation, Carescape R860

**GE-Marquette** : Monitor Dash 2000, 3000, 4000, 4000N, 5000

**GE-Marquette** : Monitor Eagle 2, Eagle 3000, 3100, 4000

**GE-Marquette** : Monitor Solar 7000, 8000, 8000i, 8000m, 9000, 9500

**GE-Marquette** : Monitor Tramscope, Smart Anaesthesia

**GE- Nellcor** : Monitor de SpO2 Oximax 550 et 560

**GE-Ohmeda** : Ventilator Excel210, 7900, 7100

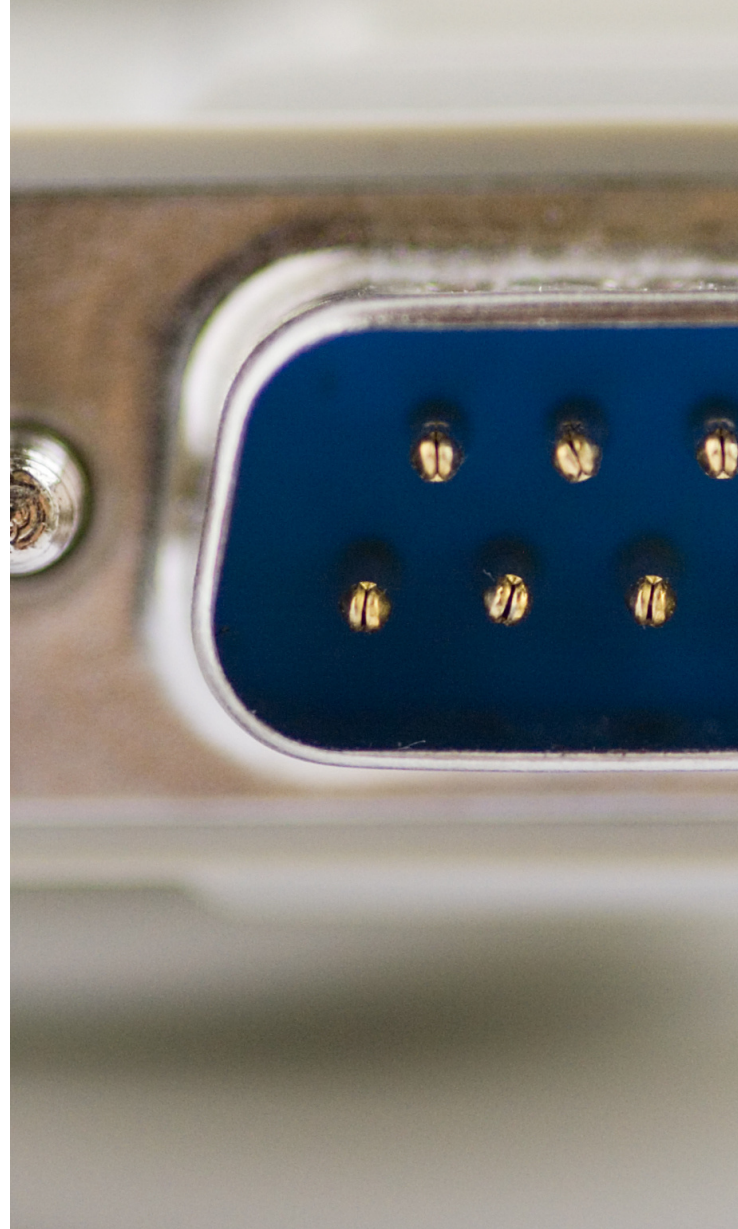
**Hamilton Medical** : Ventilator C2, G5 and Galileo

**Hamilton Medical** : C1, S1 (not validated)

**Heinen Und Löwenstein - Leon Plus**

**IDMed** : Portable curarisation monitor Tofscan

**IDMed** : Pupillometers MapStation, NeuroLight etAlgiScan (**available in Diane version 4.7.4 and upwards**)



**Immed:** Monitor Eden

**Invos Covidien** : Brain oximetry monitor 5100 C

**Invivo MDE** : IRM Monitor Millénia 3155MVS and Magnitude 3155A

**Invivo MDE** : IRM Monitor Precess Blue

**Invivo MDE** : IRM Monitor Expression

**Fukuda Denshi** : Monitor DS-7100 and 7300

**Kontron** : Ventilator ABT 4300, 5300 et 5300K

**Kontron** : Ventilator Orsa 4, Siesta iTS

**Lowenstein** : Ventilator Léon plus.

**Maquet** : Ventilator Servo900C, Servo300, Servo300A, Servo i, Servo S, Servo-U, Servo-n, Servo-Air

**Maquet** : Ventilator Flow i



# LIST OF RS 232 DRIVERS INTEGRATED IN DIANE

**409 TYPES OF DEVICES  
CONNECTABLE (OR TO  
COME) ON 31/01/2021**

**Maquet-Datascope** : Intra-aortic counterpulse pump  
System 95, 96, 97, 97e, 98, 98XT, CS100, CS300

**Marquette** : Corometrics 118, 120, 170, 171, 172, 173,  
174, 250, 256, 259

**Masimo** : Monitor Root (modules Radical-7, Sedline,  
O3, ISA, OR+)

**Métrodoloris** : Monitor ANI Physio-Doloris

**Mindray** : Monitor IPM g800

**Mindray-Datascope** : Monitor -Passport, Passport  
2, Passport 2 XG ou EL, Spectrum, Spectrum OR and  
Expert

**Mindray-Datascope** : Moniteur Trio and Visa

**Mindray-Datascope** : Monitor Passport 5

**Mindray** : Monitor Accutorr Plus and Accutorr V

**Nihon Kohden** : Monitor Lifescope A (BSM serie  
5000), Lifescope I and Lifescope L (BSM serie 2000),  
Lifescope J (BSM série 9000), Lifescope TR (6000)

**Nihon Kohden** : BSM 2301, 2303, 2351, 2353, 5105,  
5106, 5135, 5136, 6301, 6311, 6312, 6313, 6331, 6332,  
6333, 6501, 6701

**Nihon Kohden** : PVM 2701, 2703

**Nippon Colin** : Monitor BP-306

**Nippon Colin** : Monitor Nippon BP-508

**Nippon Colin** : Automatic blood pressure monitor BP  
8800

**Organon Teknika** : Curarisation Monitor Tof  
Watch SX : Récupération via moniteur

**PDG System** : See Stéphan

**Penlon** : Ventilator AVS Prima SP2

**Philips** : Halogen analyser M1025

**Philips** : Monitor de la série 7835X (78352,  
78353, 78354)



**Philips** : Monitor Omnicare Viridia V24/V26  
(M1204A, M1205A), A1, A2, A3 and M1

**Philips** : Moniteur Merlin (M1046A, M1046B,  
M1165, M1166, M1167, M1175, M1176, M1177,  
model 68)

**Philips** : Moniteur C1 and C3

**Philips** : Moniteur Intellivue MP5, MP 20  
(M8001A), MP30 (M8002A), MP40 (M8003A),  
MP50 (M8004A), MP60 (M8005A), MP70  
(M8007A), MP90 (M8010A)

**Philips** : Moniteur MX600, MX700, MX800

**Philips** : Cardiotocographe Séries 50A, 50IP-2,  
50IX, 50XM, 50XMO

**Philips** : Avalon FM20, FM30, FM40, FM50

**Philips** : Avalon FM20, FM30, FM40, FM50 via  
MIB (Philips protocole)

**Philips** : Ventilator Respironics V60

**Philips** : Monitor Efficia CM150

# LIST OF RS 232 DRIVERS INTEGRATED IN DIANE

**409 TYPES OF DEVICES  
CONNECTABLE (OR TO  
COME) ON 31/01/2021**

**Pulsion** : Monitor Picco

**Pulsion** : Monitor Picco+

**Pulsion** : Monitor Pulsioflex

**Resmed- Saime** : Ventilator Elisée 150, 250, 350

**Schiller** : Monitor Argus Pro

**Schiller** : Monitor d'IRM Maglife/Magscreen

**Sonicaid** : Cardiotocographe FM800

**Spacelabs** : Modular monitor 90367 (Ultraview 1030), 90369 (Ultraview 1050), 90387 (1700),

**Module PDL needed**

**Spacelabs** : Monitor 910367 (SL2200), 91369 (SL2400), 91370 (SL2600) and 91387 (SL2700, 2800, 2900, 3800, 3900 according to the options).

**Module PDL needed**

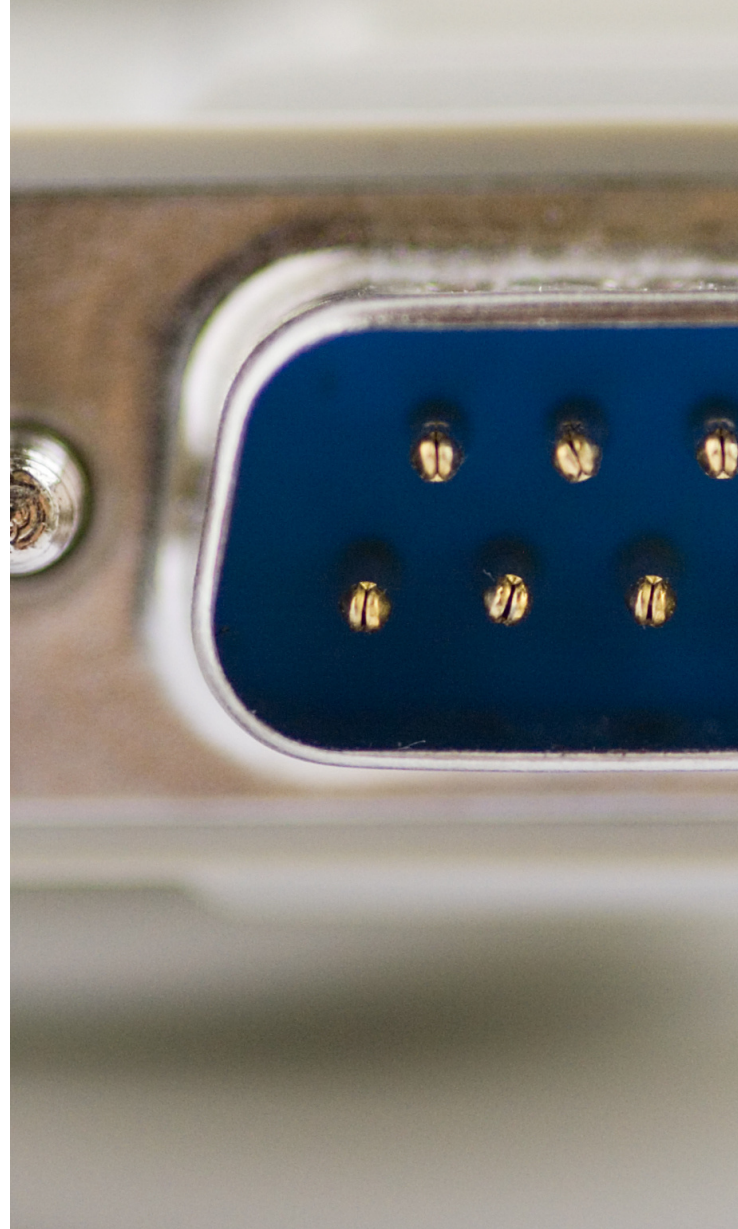
**Spacelabs** : Monitor 91390 (Qube), 91393 (XPrezzon) and Elance. **Module PDL needed**

**Stéphan/PDG System** : Ventilator Stéphanie and Sophie

**Stockert Sorin** : Device C.E.C. S3

**Stockert Sorin** : Device C.E.C. S5

**Taema** : Ventilators Alys, Alys 2000, Clarys, Clarys 2000, Félix, Félix Dual, Horus, Horus IV



**Taema** : Ventilators Monal T75, Monal T60 (once RS232 is available) and eXtend

**Terumo** : Continuous blood gas monitor CDI 100 et 101, connected to communication monitor of device C.E.C. Stockert S5 or S3 via a cable ref 45-12-61

**Terumo** : Continuous blood gas monitor CDI 500, connected to communication monitor of device C.E.C. Stockert S5 ou S3 via a cable ref 45-12-61

**Welch Allyn Propaq cs (not validated)**



# LIST OF DRIVERS FOR DATA RETRIEVAL BY DIRECT OUTPUT VIA THE NETWORK PORT

**29 TYPES OF DEVICES  
CONNECTABLE (OR TO  
COME) ON 31/01/2021**



**Fresenius** : MultiFiltrate and MultiFiltrate Pro

**GE-Marquette** : Monitor Dash 2000, 3000 and 4000

**Philips** : Monitor M2, M3, M4, X2 and MX800

**Mindray** : Monitor BeneView T5, T6, T7, T8, iPM 9800, iPM 8, 10, 12. Format HL7

**Mindray** : Monitors BeneVision N12, N15, N17. Format HL7

**Mindray/Datascope** : Monitor DPM 6 et 7 (idem Mindray BeneView T5, T6/T8). Format HL7

**Nihon Kohden** : Monitor Vismo (PVM 2701 and 2703). Format HL7

**Schiller** : Monitor Maglife Serenity ,

**iMedex Medis** : Monitor Niccomo (not validated)

**BBraun** : Syringe pump connected to SpaceStation + module SpaceCOM

**Baxter Starling: (to come: 1st quarter of 2021)**

# LIST OF DRIVERS FOR DATA RECOVERY IN HL7

**81 TYPES OF DEVICES CONNECTABLE (OR TO COME) ON 31/01/2021**

**Alaris** : Syringe pumps GS, CC, GH, TIVA, PK et pompes volumétrique GP et GW via the Gateway Station (protocole not HL7) and **the specific HL7 Service of Bow Medical**

**Baxter** : Monitor Hemodynamique Starling : **(to come: 1st quarter of 2021)**

**Fresenius Centérium (passerelle)** : Interface HL7 for data recovery from modules Link+ (gamme « Agilia Connect » : SP, SP MC, SP TIVA, SP PCA, VP, VP MC).

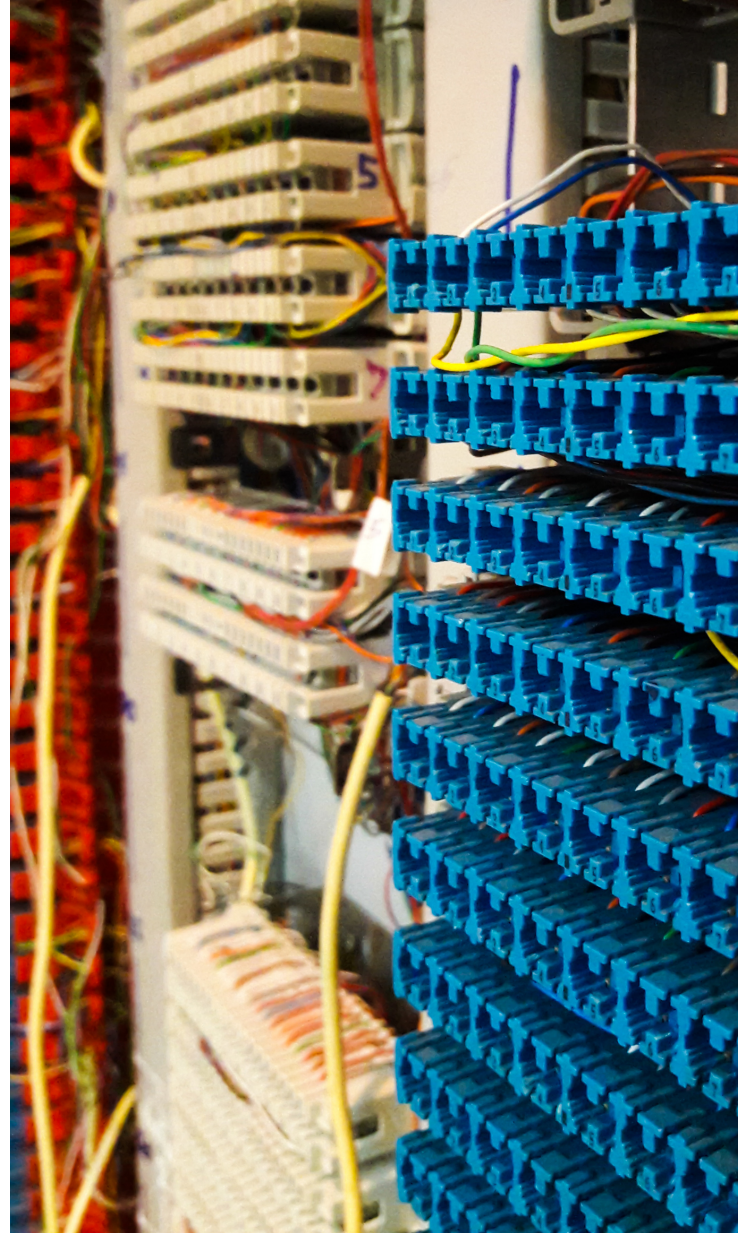
**Fresenius Exelia (via Centérium)** : **Partial support (awaiting specifications, forthcoming 2021), not validated.**

**GE** : Monitors on the series Carescape ou S/5 via the gateway Carescape

**Haemonetics** : Autotransfusion system Cell Saver Elite through the intermediary of l'HaemoCommunicator

**Nihon Kohden** : Monitor Lifescope A (BSM serie 5000), Lifescope I and Lifescope L (BSM serie 2000), Lifescope TR (6000), Vismo (PVM 2701 and 2703), BSM 3562K, BFM 3763 through the intermediary of QP-982 (old generation) and QP-993 (new generation)

**Mindray** : Monitor BeneView T5, T6, T7, T8, iPM 9800, iPM 8, 10, 12, BeneVision N12, N15, N17 by directly sending the monitors or through the central Hypervisor VI, of PDS gateway HL7 or of the e-Gateway



**Mindray/Datascope** : Monitor DPM 6 eand 7 (idem Mindray BeneView T5, T6/T8), by directly sending the monitors or through the central Hypervisor VI, of PDS gateway HL7 or of the e-Gateway

**Mindray** : Monitor MEC 1200, BeneView PM-7000, PM-8000E, PM-9000E, through the central Hypervisor VI, of the PDS gateway HL7 or the e-Gateway

**Mindray- Datascope** : Monitor DPM 4 and 5 (idem BeneView PM-7000 et PM-9000), through the central Hypervisor VI, of PDS gateway HL7 or the e-Gateway



# LIST OF DRIVERS FOR DATA RECOVERY IN HL7

**81 TYPES OF DEVICES CONNECTABLE (OR TO COME) ON 31/01/2021**

**Philips** : Monitor Omnicare Viridia V24, Merlin, Intellivue, MP2, MP3, MP4, MP20, MP30, MP40, MP50, MP60, MP70, MP90, X2, MX600, MX700, MX800 (Intellivue XY) through the central gateway. **BOW Médical** is also able to recover data from these monitors in the absence of a Philips central station, via the Philips-specific HL7 emulator it has developed.

**Philips** : IP5 via interface of Diane's HL7 (data output in HL7 directly) Mr400 via IP5.

**Spacelabs** : Monitor 90367 (Ultraview 1030), 90369 (Ultraview 1050), 92369 (Ultraview SL 2400), 91387 (Ultraview SL 2700), Le cube, Xprezon (90xxx et 91xxx), Elance, etc. via the gateway HL7 Intesys Clinical Suite / ICS

